



USER MANUAL

iLo Speaker - The Wireless Party Speaker
iLo Speaker - Enceinte sans fil lumineuse
Model No: XP81025

Patented Product. Specification & appearance subject to change without notice. All trademarks and registered trademarks are the property of their respective owners © Xoopar Ltd. **Tips:** (1) Hand it to electronic waste disposal to protect the environment. (2) Slight heat increases while charging is normal. (3) Ventilation can help to extend battery life. (4) Do not put into direct rain.

VIDEO TUTORIAL INCLUDED We've added video guide to improve user experience. Please scan the QR codes or enter the given links at the back of this page to access the video, enjoy!

@xoopsar @ f

#joyintechology | xoopar.com | xoopar.fr
xoopsar.com/xoosarusa

Specifications

Wireless Version: V4.2
Transmission Distance: Up to 10M
Output Power: 10W
Battery Type: Rechargeable Li-ion, 1,200mAh
Battery Life: Up to 6 hours
Supports iPhone, iPad, most smartphones & tablets
Recharging Time: app. 3,5 hours
Interface: Micro USB (Recharge)
Features: Stereo Pairing, Party Mode

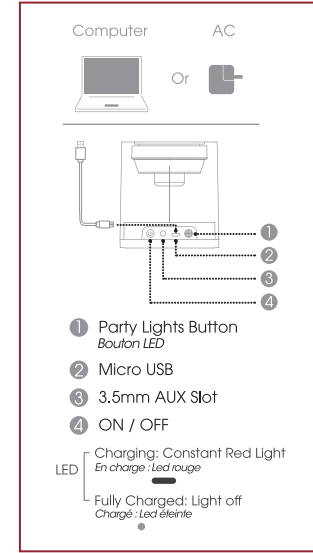
Caution:

Each tablet and smartphone may apply different default volume-level setting. This is not a defect. After connecting wirelessly simply use physical volume setting to adjust volume level. To reset the speaker's wireless setting press 10 seconds to power button.

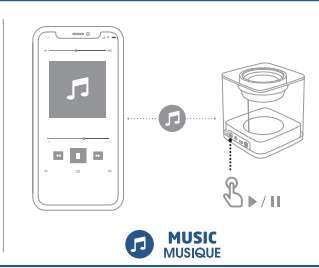
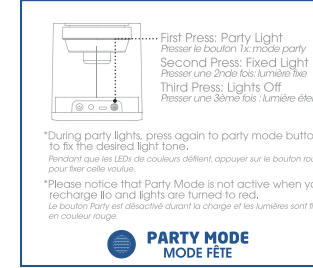
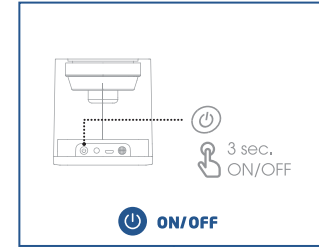
- ENG** Wireless Speaker with amazing sound (10W). Enjoy stereo sound by pairing one more ILO Speaker (TWS). Trigger party mode button and enjoy changing LED lights.
- FR** Enceinte sans fil de 10 Watts avec caisson de basse renforcé pour une immersion totale. Profitez d'un son stéréo en appairant un haut parleur supplémentaire (TWS). Activez le mode fête et profitez du changement des lumières LED.
- ES** Altavoz inalámbrico con sonido estéreo (10W). Disfrute del sonido estéreo emparejando otro altavoz (TWS). Active el botón del modo de fiesta y disfrute de las luces LED cambiantes.
- IT** Altoparlante wireless con suono stereo (10 W). Ascolta il suono in stereo abbinando un altro altoparlante (TWS). Premi il pulsante della modalità party per attivare gli effetti luminosi.
- DE** Kabelloser Lautsprecher mit Stereoklang (10W). Für Stereoklang einfach nur einen weiteren Lautsprecher verbinden (TWS). Drücken Sie die Party-Modus-Taste und sorgen Sie mit wechselnden LED-Lichtern für Stimmung.
- PT** Altifalante sem fios com som estéreo (10W). Desfrute do som estéreo emparelhando mais um altifalante (TWS). Ative o botão do modo de festa e desfrute das luzes LED que mudam.
- NL** Draadloze luidspreker met stereogeluid (10W). Geniet van stereogeluid door nog een luidspreker te koppelen (TWS). Schakel de party-modus in en geniet van wisselende led-lampjes.
- ROU** Boxă wireless cu sunet stereo (10W). Bucurați-vă de sunet stereo când cuplați o boxă suplimentară (TWS). Buton de declanșare a modului de petrecere pentru a vă bucura de luminile LED schimbătoare.
- SWE** Trådlös högtalare med stereoljud (10 W). Upplev stereoljud genom att parkoppla en till högtalare (TWS). Tryck på knappen partyläge och upplev skiftande LED-lampor.
- AR** سماعة لاسلكية مع صوت استريو (10 واط). استمتع بصوت استريو باقران سماعة إضافية (TWS). شغل زر وضع الحفلات واستمتع بأضواء led متغيرة.
- SCH** 立体声无线扬声器 (10W)。与另一只扬声器配对后，即可享受立体声效果 (TWS)。一键开启聚会模式，尽享缤纷变幻的LED灯光的魅力。
- TCH** 立體聲無線揚聲器 (10W)。再配一個揚聲器即可享受立體聲 (TWS)。按下派對模式按鈕，LED燈會不斷變色。
- KR** 스테레오 사운드 무선 스피커 (10W)。1개 이상의 스피커를 페어링하여 스테레오 사운드로 이용 가능 (TWS)。파티 모드 버튼을 누르면 LED 등 색상이 변함.

正面

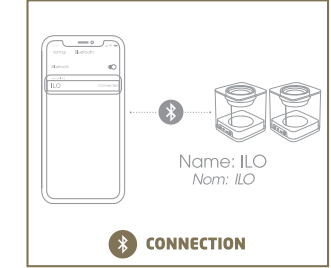
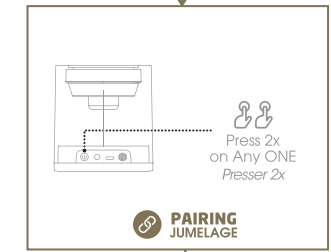
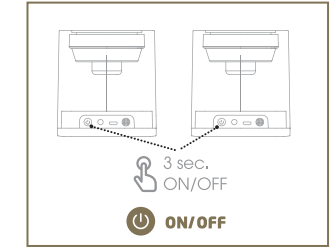
OVERVIEW VUE D'ENSEMBLE



SINGLE SPEAKER MANUAL UTILISATION MONO



STEREO (2 SPEAKERS) PAIRING MANUAL UTILISATION STEREO



VIDEO LINKS

YouTube
www.youtube.com/
user/XooparHongKong



OR

YOUKU
i.youku.com/xoopar
(For China)



反面

ILO SPEAKER

Model:XP81025

Material: 太空梭亚光双面铜版纸 Thickness: 80G Paper Card Size:150mmx 150mm Printing Method: 正反印刷、折叠

All Area

CMYK